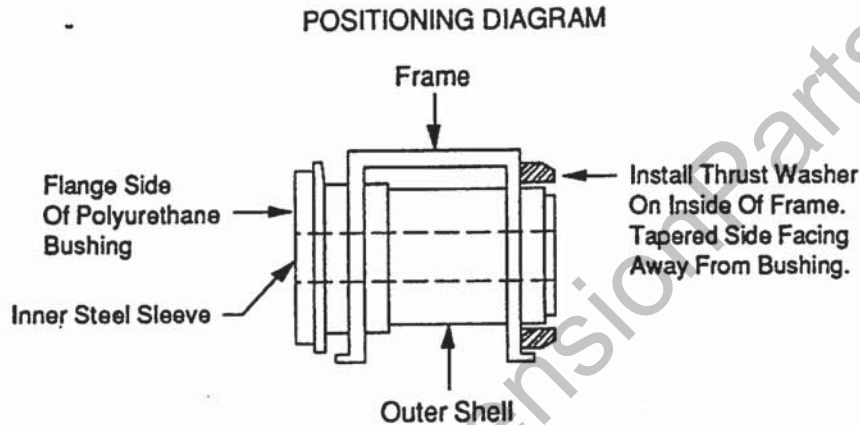


Instructions For Removal And Installation Of Frame Shackle Bushing (Chevy S-10 Pickup & Blazer, Ford Explorer, Mazda Navajo)

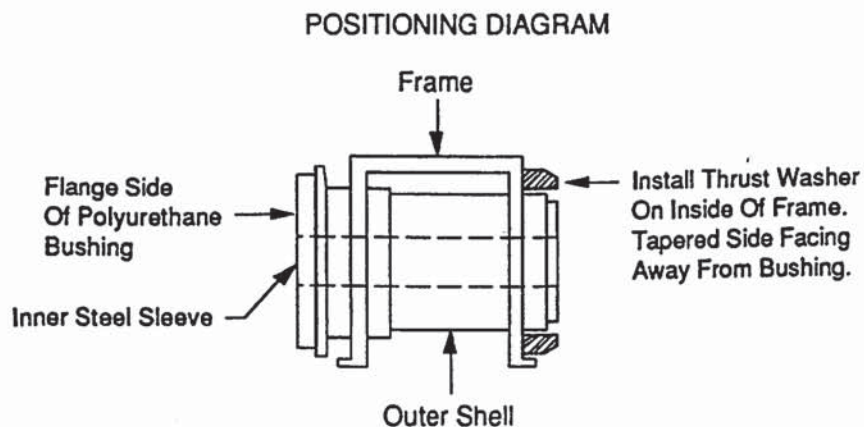
- 1) The bushing at this location is bonded to an outer shell and inner sleeve. The outer shell is not removable from the vehicle and therefore must be reused. Do not damage outer shell when removing bushing.
- 2) Removal of this bushing is best accomplished by using heat to debond the rubber and metal. A wet rag must be used as a heat shield to protect the body, wiring and any components in close proximity from heat damage. Extreme caution must be used while applying heat. **PLEASE NOTE THAT THIS PROCEDURE IS EXTREMELY DANGEROUS AND SHOULD BE DONE BY A PROFESSIONAL.**
- 3) After removal of the original rubber bushing, clean off any residue rubber that may still be attached to the outer shell.
- 4) Lightly grease inside of shell; outside, inside and flange area of the new polyurethane bushing; edges of thrust washer that contacts metal; outside of steel sleeve supplied and any other areas that polyurethane bushing may contact metal.
- 5) Using the diagram below as a guide install the new polyurethane bushing, then the inner steel sleeve and thrust washer.



****FORM 1001**

Instructions For Removal And Installation Of Frame Shackle Bushing (Chevy S-10 Pickup & Blazer, Ford Explorer, Mazda Navajo)

- 1) The bushing at this location is bonded to an outer shell and inner sleeve. The outer shell is not removable from the vehicle and therefore must be reused. Do not damage outer shell when removing bushing.
- 2) Removal of this bushing is best accomplished by using heat to debond the rubber and metal. A wet rag must be used as a heat shield to protect the body, wiring and any components in close proximity from heat damage. Extreme caution must be used while applying heat. **PLEASE NOTE THAT THIS PROCEDURE IS EXTREMELY DANGEROUS AND SHOULD BE DONE BY A PROFESSIONAL.**
- 3) After removal of the original rubber bushing, clean off any residue rubber that may still be attached to the outer shell.
- 4) Lightly grease inside of shell; outside, inside and flange area of the new polyurethane bushing; edges of thrust washer that contacts metal; outside of steel sleeve supplied and any other areas that polyurethane bushing may contact metal.
- 5) Using the diagram below as a guide install the new polyurethane bushing, then the inner steel sleeve and thrust washer.



****FORM 1001**