

BODY MOUNT ASSEMBLY INSTRUCTIONS FOR KIT #1-114

1) BEFORE INSTALLING BODY MOUNTS, YOU MUST REMOVE THE FOUR SCREWS THAT CONNECT THE FAN SHROUD TO THE RADIATOR. THIS WILL ALLOW YOU TO LOWER THE FAN SHROUD ONCE THE BODY IS LIFTED.

2) DISCONNECT THE TRANSFER CASE SHIFT LINKAGE FROM SHIFT LINKAGE BRACKET THAT IS MOUNTED TO THE UNDERSIDE OF BODY.

3) DISCONNECT THE TRANSFER CASE SHIFT LINKAGE BRACKET FROM THE VEHICLE. THIS IS DONE BY REMOVING THE CARPET ON THE DRIVERS SIDE OF THE VEHICLE AND REMOVING THE FOUR BOLTS BELOW THE TRANSFER CASE SHIFT LEVER. REMOVE THE BRACKET FROM UNDER THE VEHICLE. REMOVE THE TWO BOLTS HOLDING THE LINKAGE PLATE AND GASKET TO THE BRACKET. INSTALL SHIFT LINKAGE ADAPTER PLATE(PLT-1271) ON TO SHIFT LINKAGE BRACKET WITH LARGE HOLE ON ADAPTER PLATE FACING DOWN (SEE FIG. #1). INSTALL ORIGINAL LINKAGE PLATE AND GASKET TO BOTTOM OF SHIFT ADAPTER PLATE (SEE FIG. #2). USE 1/4" BOLTS, NUTS AND LOCK WASHERS PROVIDED IN KIT.

4) NOTE ALL BODY MOUNT POSITIONS AND FACTORY ALIGNMENT SHIMS (IF USED) BEFORE AND DURING DISASSEMBLY. YOU MAY HAVE TO REUSE THESE SHIMS TO PROPERLY ALIGN THE BODY.

5) IF MOUNTING BOLTS AND NUTS ARE RUSTED, LIBERALLY SPRAY WITH PENETRATING OIL I.E. WD-40.

6) SUPPORT VEHICLE BODY PROPERLY BEFORE REMOVING MOUNTS. USE A 2"x4" PIECE OF WOOD 24" LONG (OR ANY OTHER SUITABLE SIZE) BETWEEN JACK AND BODY PANEL TO SPREAD THE WEIGHT LOAD OUT SO AS NOT TO DAMAGE THE BODY PANELS. IF NECESSARY, SUPPORT BODY IN SEVERAL AREAS.

7) LOOSEN ALL BOLTS BUT DO NOT REMOVE.

8) WORKING FROM ONLY ONE SIDE OF VEHICLE AT A TIME REMOVE MOUNTING BOLTS AND RAISE BODY ONLY HIGH ENOUGH TO REPLACE MOUNT, NEVER HIGHER. ALSO CHECK OTHER AREAS ON BODY AND FRAME I.E. HOSES, WIRES AND FAN SHROUD TO AVOID ANY INTERFERENCE PROBLEMS WHEN RAISING BODY. REMOVE DIPSTICK TO AVOID DAMAGE.

9) REPLACE MOUNTS ONE AT A TIME. A DIAGRAM HAS BEEN PROVIDED FOR INFORMATION AS TO WHICH MOUNTS, WASHERS, SLEEVES AND BOLTS TO USE FOR EACH POSITION. INSTALL BOLTS BUT DO NOT TIGHTEN UNTIL ALL MOUNTS HAVE BEEN REPLACED.

10) AFTER ALL MOUNTS HAVE BEEN REPLACED, ALIGN SUBFRAME TO BODY AND TORQUE BOLTS TO FACTORY SPECIFICATIONS.

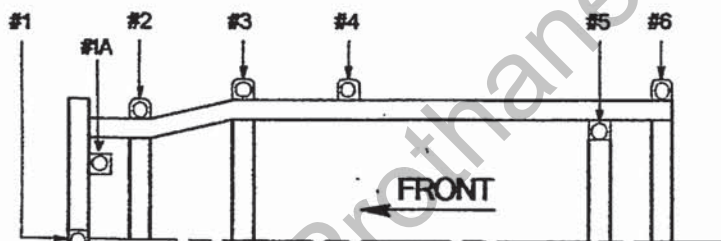
11) INSTALL TRANSFER CASE SHIFT LINKAGE BRACKET TO BODY AND CONNECT SHIFT LINKAGE.

12) REINSTALL FAN SHROUD. DRILL HOLES FOR NEW 1/4" BOLTS 1" LOWER THAN ORIGINAL HOLES ON THE RADIATOR BRACKET THAT SHROUD MOUNTS TO. INSTALL FAN SHROUD USING 1/4" BOLTS, NUTS AND LOCK WASHERS PROVIDED IN KIT. CHECK FAN CLEARANCE AT BOTTOM OF SHROUD.

13) AFTER DRIVING VEHICLE FOR ABOUT 1000 MILES OR OFF ROADING, RE-TORQUE BOLTS AGAIN. THIS IS TO INSURE THAT THE BOLTS HAVE NOT LOOSENED DUE TO INITIAL SETTLING THAT MAY TAKE PLACE.

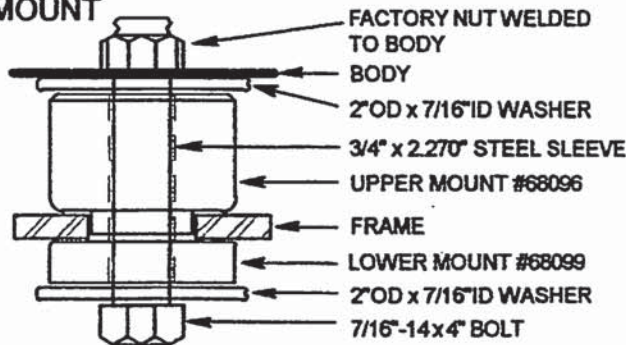
MOUNTING POSITIONS

MOUNTING POSITIONS ARE NUMBERED STARTING WITH #1 FOR THE MOST FORWARD POSITION TOWARD THE FRONT OF THE VEHICLE AND RESPECTIVELY HIGHER NUMBERS TOWARD THE REAR OF THE VEHICLE.

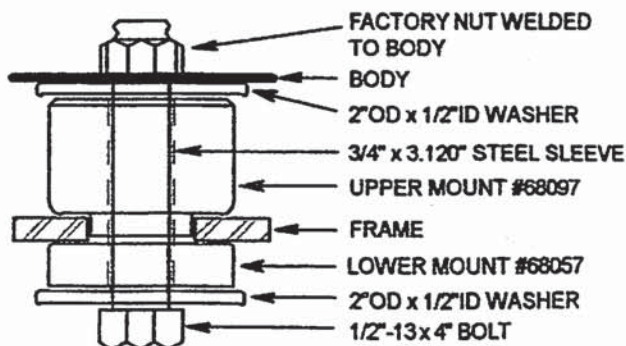


TRANSFER CASE SHIFT LINKAGE BRACKET

#1, #5 & #6 POSITION BODY MOUNT



#2, #3 & #4 POSITION BODY MOUNT



PARTS LIST FOR KIT #1-114

PART#	DESCRIPTION	QTY	POS.#
U-68100	GRILL CUSHION MOUNT	2	1A
U-68096	UPPER BODY MOUNT	5	1,5&6
U-68099	LOWER BODY MOUNT	5	1,5&6
U-68097	UPPER BODY MOUNT	6	2,3&4
U-68057	LOWER BODY MOUNT	6	2,3&4
SLV-60831	3/4" x 3.120" STEEL SLEEVE	6	2,3&4
SLV-60847	3/4" x 2.270" STEEL SLEEVE	5	1,5&6
WASH-1158	2"OD x 7/16"ID WASHER	10	1,5&6
WASH-1159	2"OD x 1/2"ID WASHER	12	2,3&4
BOLT-58	7/16"-14 x 3 1/2" BOLT	4	5&6
BOLT-59	1/2"-13 x 4" BOLT	6	2,3&4
BOLT-1167	7/16"-14 x 4" BOLT	1	1
PLT-1271	SHIFT ADAPTER PLATE	1	SEE INST.
BOLT-55	1/4"-20 x 3/4" BOLT	8	SEE INST.
NUT-20	1/4"-20 NUT	8	SEE INST.
WASH-1190	1/4" LOCK WASHER	8	SEE INST.