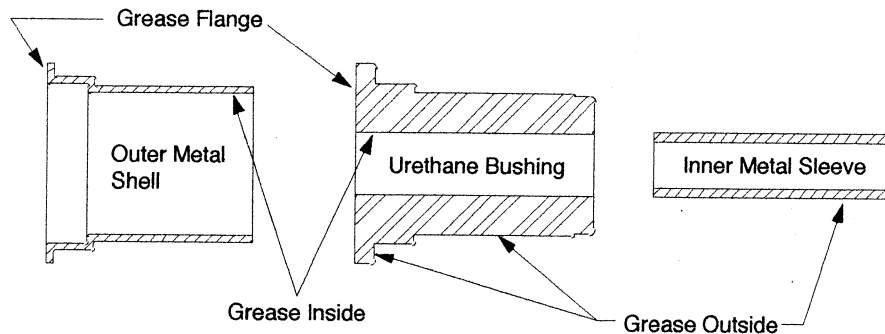


## INSTALLATION INSTRUCTIONS FOR CONTROL ARM BUSHINGS WITHOUT OUTER SHELLS

- 1) CONTROL ARM BUSHINGS ARE DESIGNED TO REPLACE THE RUBBER PORTION OF THE ORIGINAL BUSHING (AND INNER SLEEVE WHEN SUPPLIED). THEREFORE THE ORIGINAL OUTER METAL SHELLS, WASHERS, SPACERS AND SPECIAL WASHERS AND SLEEVES THAT ARE USED WITH CAM BOLT TYPE BUSHINGS MUST BE REUSED. ALSO IF INNER METAL SLEEVE IS NOT INCLUDED IN KIT, THEN THE ORIGINAL INNER SLEEVE MUST BE REUSED.
- 2) DISASSEMBLE CONTROL ARM, BEING CAREFUL NOT TO DAMAGE ANY PARTS THAT ARE TO BE REUSED. REMOVAL OF THE ORIGINAL RUBBER BUSHING IS BEST ACCOMPLISHED BY BURNING AWAY THE ORIGINAL RUBBER. PAY CAREFUL ATTENTION TO OTHER ADJOINING PARTS THAT COULD BE DAMAGED BY HEAT. **CAUTION-THIS SHOULD BE DONE BY A QUALIFIED SPECIALIST AS IT IS EXTREMELY DANGEROUS.**
- 3) REMOVE ALL OF THE ORIGINAL RUBBER BUSHING MATERIAL AND CLEAN CONTACT SURFACES. THIS CAN BE DONE BY WIRE BRUSHING, SANDING OR SIMILAR PROCESS.
- 4) DISASSEMBLE NEW URETHANE BUSHINGS. LIGHTLY GREASE BUSHINGS AS DIAGRAM INDICATES WITH SPECIAL SUPER GREASE INCLUDED IN KIT. IF MORE GREASE IS NEEDED, OBTAIN SUPER GREASE FROM YOUR DEALER (PART #19-1750). USE ONLY OUR SPECIAL SUPER GREASE.
- 5) INSTALL NEW URETHANE BUSHINGS AND ALL NECESSARY WASHERS, SPACERS AND SLEEVES. TORQUE TO FACTORY SPECIFICATIONS.
- 6) RE-ALIGN VEHICLE.
- 7) AFTER DRIVING VEHICLE FOR APPROXIMATELY 50 MILES, RE TORQUE BUSHING RETAINING NUTS AND OR BOLTS TO BE SURE THEY HAVE NOT LOOSENED DUE TO THE BUSHINGS SETTLING IN. REPEAT THIS PROCEDURE AFTER VEHICLE IS RACED, DRIVEN OFFROAD OR DRIVEN IN ABUSIVE CONDITIONS.

### CONTROL ARM BUSHING DIAGRAM

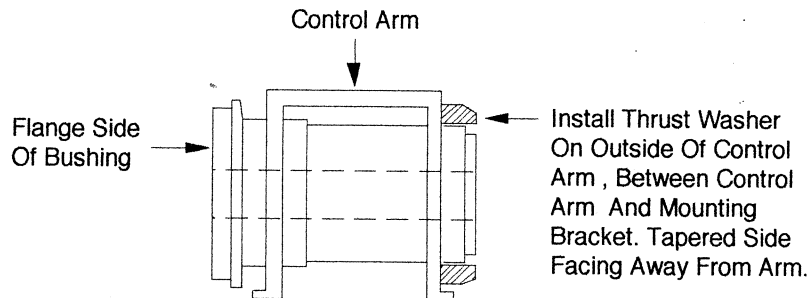
Grease All Contact Surfaces Between Bushing And Metal



### THRUST WASHER INSTALLATION INSTRUCTIONS FOR LOWER CONTROL ARM BUSHING

THRUST WASHERS PREVENT THE SIDEWARD MOVEMENT OF THE CONTROL ARM THAT MAY OCCUR DURING CORNERING. INSTALL THEM AS THE DIAGRAM SHOWS BELOW.

#### POSITIONING DIAGRAM FOR THRUST WASHER



6-601			6-603			6-604		
NUMBER	DESC	QTY	NUMBER	DESC	QTY	NUMBER	DESC	QTY
19-1750-001	SUPER GREASE	1	19-1750-001	SUPER GREASE	1	19-1750-001	SUPER GREASE	1
SLV-60529	7/8" x 1.800"	2	SLV-60529	7/8" x 1.800"	2	SLV-60546	7/8" x 1.800"	2
U-60246	AXLE PIVOT BUSHING	2	U-64026	AXLE PIVOT BUSHING	2	U-64028	AXLE PIVOT BUSHING	2
U-64070	THRUST WASHER	2	U-64027	THRUST WASHER	2	U-64027	THRUST WASHER	2

7-307			7-308			7-314		
NUMBER	DESC	QTY	NUMBER	DESC	QTY	NUMBER	DESC	QTY
19-1750-001	SUPER GREASE	2	19-1750-001	SUPER GREASE	4	19-1750-001	SUPER GREASE	2
SLV-60674	7/8" x 2.530"	4	SLV-60674	7/8" x 2.530"	4	C-10008	C-ARM BUSH w/SHELL	6
U-64077	REAR C-ARM BUSHING	4	U-64077	REAR C-ARM BUSHING	4	SLV-60636	3/4" x 2.400"	2
U-64079	THRUST WASHER	4	U-64079	THRUST WASHER	4	U-64038	THRUST WASHER	6
U-64112	THRUST WASHER	2	U-64112	THRUST WASHER	4	U-64093	C-ARM BUSHING	2
C-10023	C-ARM BUSHING w/SHELL	2	C-10023	C-ARM BUSHING w/SHELL	4	U-64115	THRUST WASHER	2

6-605			7-207			6-201		
NUMBER	DESC	QTY	NUMBER	DESC	QTY	NUMBER	DESC	QTY
19-1750-001	SUPER GREASE	1	19-1750-001	SUPER GREASE	2	19-1750-001	SUPER GREASE	1
SLV-60669	7/8" x 2.000"	2	SLV-60659	3/4" x 2.345"	4	SLV-60764	5/8" x 2.085"	2
U-64069	AXLE PIVOT BUSHING	2	SLV-60711	3/4" x 1.595"	4	U-64202	C-ARM BUSH LOWER	4
U-64017	THRUST WASHER	2	U-64258	UPPER C-ARM BUSHING	4	U-64203	C-ARM THRUST WASHER	4
			U-64259	LOWER C-ARM BUSHING	4	NOTE: Only used with original factory control arm.		
			U-64260	LOWER THRUST WASHER*	4			

\*NOTE FOR 84-87 MODELS ONLY

7-309			7-310			4-211		
NUMBER	DESC	QTY	NUMBER	DESC	QTY	NUMBER	DESC	QTY
19-1750-001	SUPER GREASE	4	19-1750-001	SUPER GREASE	4	19-1750-001	SUPER GREASE	4
SLV-60674	7/8" x 2.530"	2	SLV-60674	7/8" x 2.530"	2	SLV-60698	7/8" x 2.600"	4
SLV-60685	7/8" x 2.600"	4	SLV-60685	7/8" x 2.600"	6	SLV-60838	3/4" x 2.360"	4
U-64077	C-ARM BUSHING	2	U-64077	C-ARM BUSHING	2	U-64239	C-ARM BUSHING, UPPER	4
U-64078	C-ARM BUSHING	4	U-64078	C-ARM BUSHING	6	U-64241	C-ARM BUSHING, LOWER	4
U-64079	THRUST WASHER	2	U-64079	THRUST WASHER	2	U-64240	THRUST WASHER	4
U-64080	THRUST WASHER	2	U-64080	THRUST WASHER	2	U-64242	THRUST WASHER	4
U-64081	THRUST WASHER	2	U-64081	THRUST WASHER	4			

88-302			7-313			14-206		
NUMBER	DESC	QTY	NUMBER	DESC	QTY	NUMBER	DESC	QTY
19-1750-001	SUPER GREASE	4	19-1750-001	SUPER GREASE	4	19-1750-001	SUPER GREASE	2
SLV-60674	7/8" x 2.530"	2	SLV-60685	7/8" x 2.600"	8	SLV-60885	7/8" x 2.600"	2
SLV-60685	7/8" x 2.600"	8	U-64078	REAR C-ARM BUSHING	8	U-64295	C-ARM BUSH, FT LOWER	2
U-64077	C-ARM BUSHING	2	U-64080	THRUST WASHER	4	U-64296	THRUST WASHER,	2
U-64078	C-ARM BUSHING	8	U-64081	THRUST WASHER	4			
U-64079	THRUST WASHER	2						
U-64080	THRUST WASHER	4						
U-64081	THRUST WASHER	4						

FORM 202A PAGE 2 of 2 REV 7/18/03