

Installation Instructions

For

Kit No. 7-144; 1959–64 Chevy Impala, Caprice, Bel Air Body Mount Kit

Parts List

Position 1

- 2 – WASH-42 (.813x.406x.070) Washer
- 2 – PLT-1308 Welded Plate with Nut
- 2 – Bolt-1174 (3/8-16x1.00) Bolt

Position 2 thru 5

- 8 – 68125 Upper Bushing
- 8 – 68126 Lower Bushing
- 8 – WASH-64 (2.50x.437x.120) Upper Washer
- 8 – WASH-1158 (2.00x.437x.100) Lower Washer
- 8 – BOLT-1166-001 (7/16 -14 x 3.00) Bolt
- 8 – SLV-60854 (.75x.50x1.50) Sleeve

FORM 7-144 – Instruction Sheet



CAUTION

If you are unfamiliar with this type of work, we recommend that a qualified service center specializing in automotive repair work be consulted. If you choose to do this yourself, it is further recommended that you possess a factory service manual to ensure proper procedures for removal, replacement, and torque specs. This list of instructions is intended to be used as a guideline for the safe installation of Prothane Motion Control, polyurethane bushings, upon removal of the factory components.

DIAGRAM – A MOUNT LOCATIONS

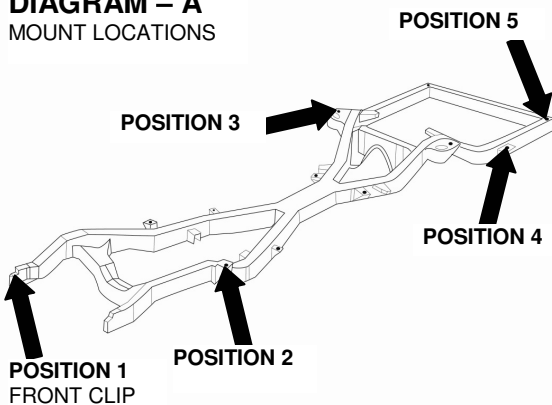


DIAGRAM – B TYPICAL MOUNT INSTALLATION

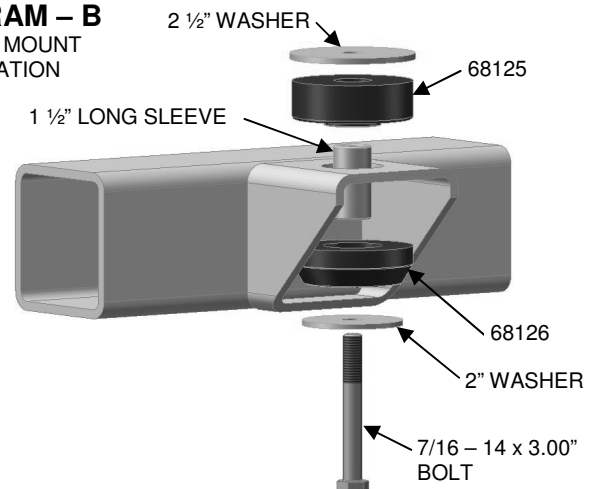
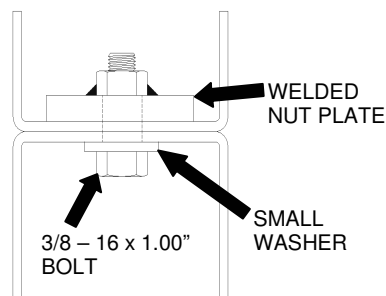


DIAGRAM-C FRONT CLIP



REMOVAL AND INSTALLATION PROCEDURE

Loosen all mount positions on both sides of vehicle, refer to diagram "A" for locations, but do not completely remove bolts. Place a floor jack, or similar lifting device, under the rocker panel on one side of the vehicle with a block of wood of sufficient size to disperse the load of the vehicle and not cause damage to the underside of the rocker panel. Remove all bolts from one side of the vehicle and lift the body just enough to remove the mount bushings and hardware. *Take caution to not cause damage to brake lines, fan shroud, and other hoses and wiring while lifting body.* Make note of any alignment shims that may be present; they must be returned to the same position to retain proper body alignment.

After removing old bushings and hardware, install the upper Prothane polyurethane bushings, washers, and any shims in positions 2 thru 5. Refer to diagram "B" for proper installation of polyurethane bushings. *Be sure bushing nipples are located in the holes of the mounting brackets.* Lower body onto the upper bushings just enough to install the sleeves and lower bushings, install 2" washers, and then start the bolts for positions 2 thru 5, but do not tighten. Completely lower body onto mounts.

Repeat the above procedure on the other side of the vehicle. With all positions 2 thru 5 in place, lower the body fully onto mounts. Tighten all mounting bolts in positions 2 thru 5, to 40 - 50 ft.-lbs. Next, replace the front clip positions with the hardware provided in the kit. Refer to diagram - "C" for proper front clip installation. Torque bolts to 30 ft.-lbs.

TECHNICAL ASSISTANCE 1-888-PROTHANE

© 2010 Prothane Motion Control. All rights reserved.
May not be reproduced, in any form, or by any means,
without the written consent of Prothane Motion Control.

FORM 7-144

12/2010 JTL