

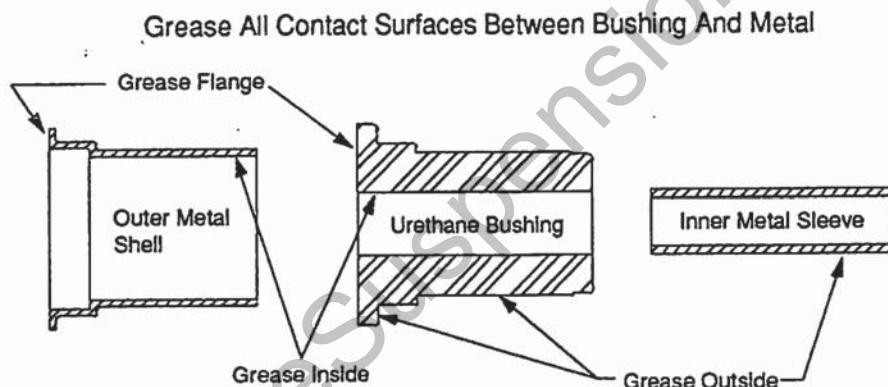
INSTALLATION INSTRUCTIONS FOR UPPER CONTROL ARM BUSHINGS WITH OUTER SHELLS

- 1) CONTROL ARM BUSHINGS ARE PRELUBED AND READY TO INSTALL. TO EASE INSTALLATION IT MAY SOMETIMES BE EASIER TO DISASSEMBLE AND INSTALL BUSHING PARTS SEPARATELY. IF BUSHINGS ARE DISASSEMBLED IT MAY BE NECESSARY TO RE-LUBRICATE BUSHINGS. IF NEEDED LIGHTLY GREASE BUSHINGS WITH SPECIAL TEFLON GREASE INCLUDED IN KIT. ALSO GREASE ANY OTHER AREAS OF THE POLYURETHANE BUSHING THAT MAY CONTACT METAL. IF MORE GREASE IS NEEDED, OBTAIN TEFLON GREASE FROM YOUR DEALER (PART #19-1750). USE ONLY OUR SPECIAL TEFLON GREASE.
- 2) INSTALL NEW URETHANE BUSHINGS AND ALL NECESSARY WASHERS, SPACERS AND SLEEVES. TORQUE TO FACTORY SPECIFICATIONS.
- 3) RE-ALIGN VEHICLE.
- 4) AFTER DRIVING VEHICLE FOR APPROXIMATELY 50 MILES, RE-TORQUE BUSHING RETAINING NUTS AND OR BOLTS TO BE SURE THEY HAVE NOT LOOSENEED DUE TO THE BUSHINGS SETTLING IN. REPEAT THIS PROCEDURE AFTER VEHICLE IS RACED, DRIVEN OFFROAD OR DRIVEN IN ABUSIVE CONDITIONS.

INSTALLATION INSTRUCTIONS FOR LOWER CONTROL ARM BUSHINGS WITHOUT OUTER SHELLS

- 1) CONTROL ARM BUSHINGS ARE DESIGNED TO REPLACE THE RUBBER PORTION OF THE ORIGINAL BUSHING (AND INNER SLEEVE WHEN SUPPLIED). THEREFORE THE ORIGINAL OUTER METAL SHELLS, WASHERS, SPACERS AND SPECIAL WASHERS AND SLEEVES THAT ARE USED WITH CAM BOLT TYPE BUSHINGS MUST BE REUSED. ALSO IF INNER METAL SLEEVE IS NOT INCLUDED IN KIT, THEN THE ORIGINAL INNER SLEEVE MUST BE REUSED.
- 2) DISASSEMBLE CONTROL ARM, BEING CAREFUL NOT TO DAMAGE ANY PARTS THAT ARE TO BE REUSED. REMOVAL OF THE ORIGINAL RUBBER BUSHING IS BEST ACCOMPLISHED BY BURNING AWAY THE ORIGINAL RUBBER. PAY CAREFUL ATTENTION TO OTHER ADJOINING PARTS THAT COULD BE DAMAGED BY HEAT. CAUTION-THIS SHOULD BE DONE BY A QUALIFIED SPECIALIST AS IT IS EXTREMELY DANGEROUS.
- 3) REMOVE ALL OF THE ORIGINAL RUBBER BUSHING MATERIAL AND CLEAN CONTACT SURFACES. THIS CAN BE DONE BY WIRE BRUSHING, SANDING OR SIMILAR PROCESS.
- 4) DISASSEMBLE NEW URETHANE BUSHINGS. LIGHTLY GREASE BUSHINGS AS DIAGRAM INDICATES WITH SPECIAL TEFLON GREASE INCLUDED IN KIT. IF MORE GREASE IS NEEDED, OBTAIN TEFLON GREASE FROM YOUR DEALER (PART #19-1750). USE ONLY OUR SPECIAL TEFLON GREASE.
- 5) INSTALL NEW URETHANE BUSHINGS AND ALL NECESSARY WASHERS, SPACERS AND SLEEVES. TORQUE TO FACTORY SPECIFICATIONS.
- 6) RE-ALIGN VEHICLE.
- 7) AFTER DRIVING VEHICLE FOR APPROXIMATELY 50 MILES, RE TORQUE BUSHING RETAINING NUTS AND OR BOLTS TO BE SURE THEY HAVE NOT LOOSENEED DUE TO THE BUSHINGS SETTLING IN. REPEAT THIS PROCEDURE AFTER VEHICLE IS RACED, DRIVEN OFFROAD OR DRIVEN IN ABUSIVE CONDITIONS.

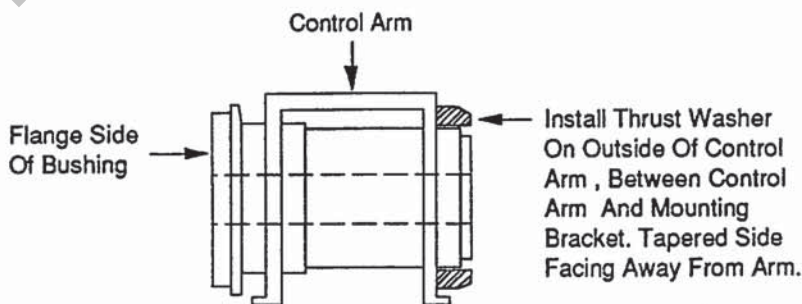
CONTROL ARM BUSHING DIAGRAM



THRUST WASHER INSTALLATION INSTRUCTIONS FOR LOWER CONTROL ARM BUSHING

THRUST WASHERS PREVENT THE SIDEWARD MOVEMENT OF THE CONTROL ARM THAT MAY OCCUR DURING CORNERING. INSTALL THEM AS THE DIAGRAM SHOWS BELOW.

POSITIONING DIAGRAM FOR THRUST WASHER



PARTS LIST FOR KIT #7-211		
PART NUMBER	DESCRIPTION	QUANTITY
19-1750-001	SUPER GREASE™	1
C-10001	UPPER C-ARM BUSH WITH SHELL	4
U-64064	LOWER C-ARM BUSH WITHOUT SHELL	2
U-64065	THRUST WASHER	2
SLV-60658	1"X.813"IDX2.780 LOWER INNER SLEEVE	2